

**Paper Reference 1MA1/2H**  
**Pearson Edexcel**  
**Level 1/Level 2 GCSE (9–1)**

**Mathematics**  
**PAPER 2 (Calculator)**  
**Higher Tier**

**Friday 10 November 2023 – Morning**

**Diagram Booklet**

**In the boxes below, write your name,  
centre number and candidate number.**

<b>Surname</b>					
<b>Other names</b>					
<b>Centre Number</b>					
<b>Candidate Number</b>					

# INSTRUCTIONS

There may be spare copies of some diagrams in case you need them.

**THIS DIAGRAM BOOKLET  
MUST BE RETURNED WITH THE  
QUESTION PAPER AT THE END  
OF THE EXAMINATION.**

# **Contents**

## **Page**

**4      Question 7**

**5      Question 10**

**6      Question 11**

**7      Question 15(a) and 15(b)**

**8      Question 15(c)**

**9      Question 16**

**10     Question 18**

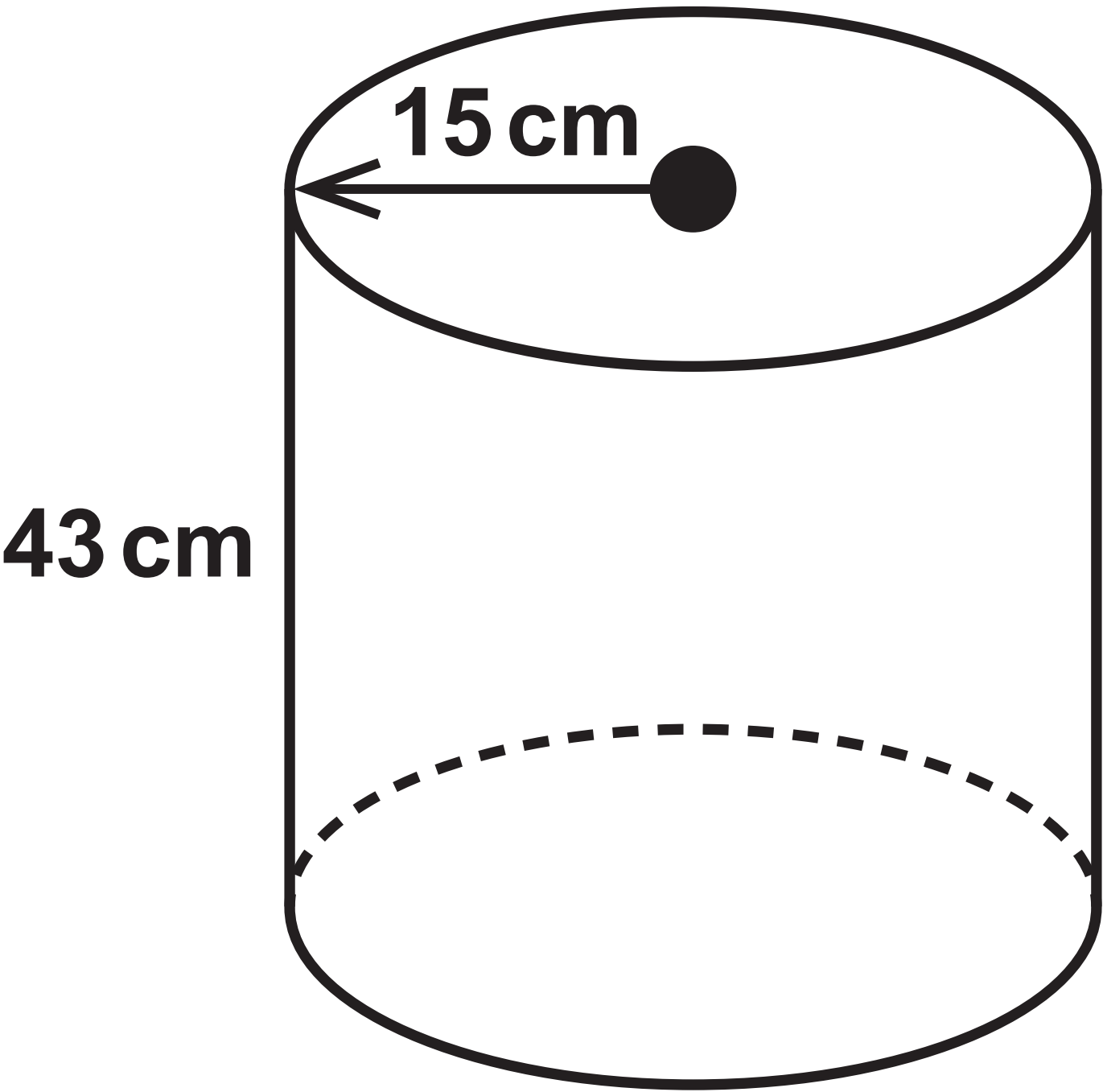
**11     Question 21**

## **Spare copies**

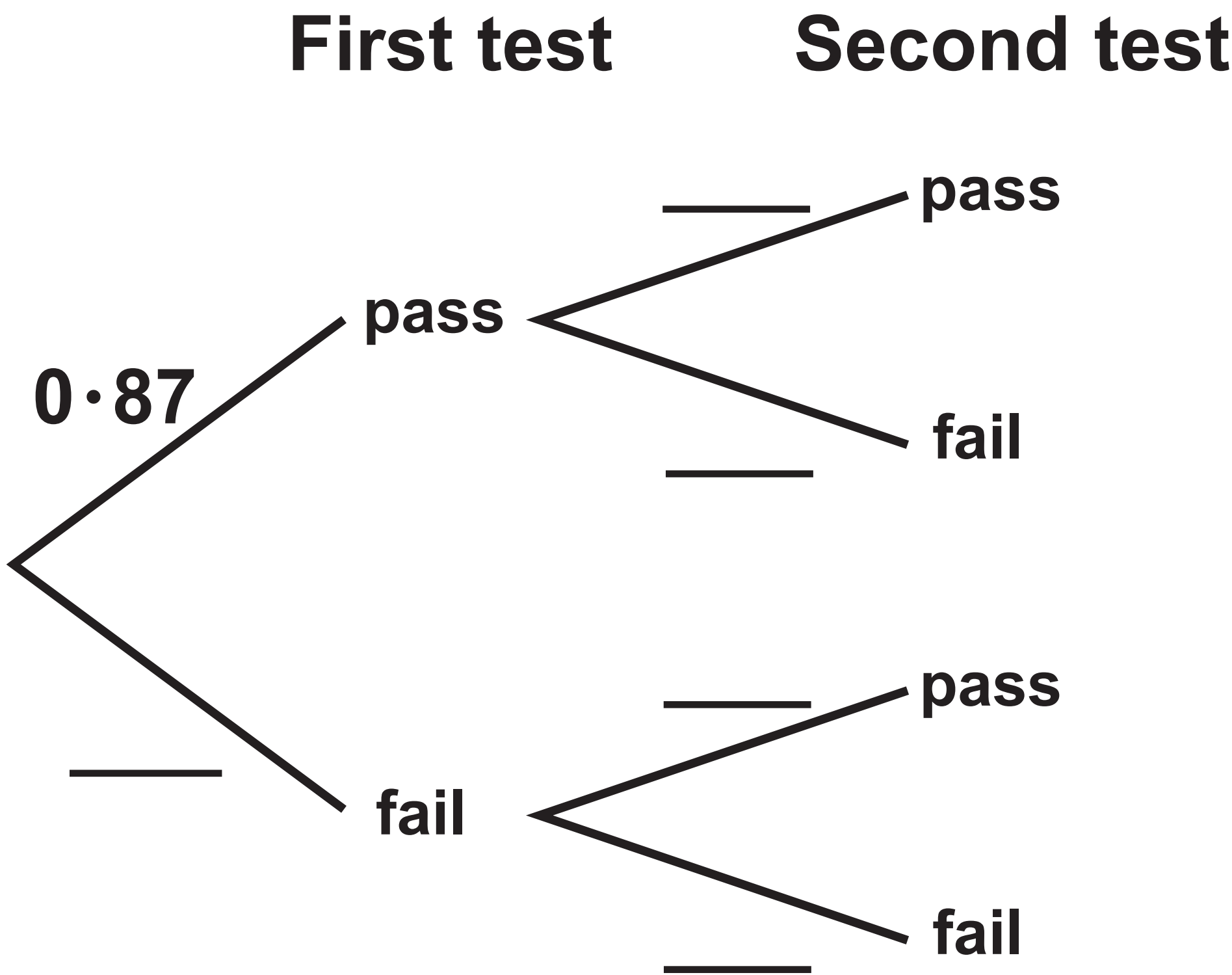
**12     Question 10**

**13     Question 15(a) and 15(b)**

Question 7

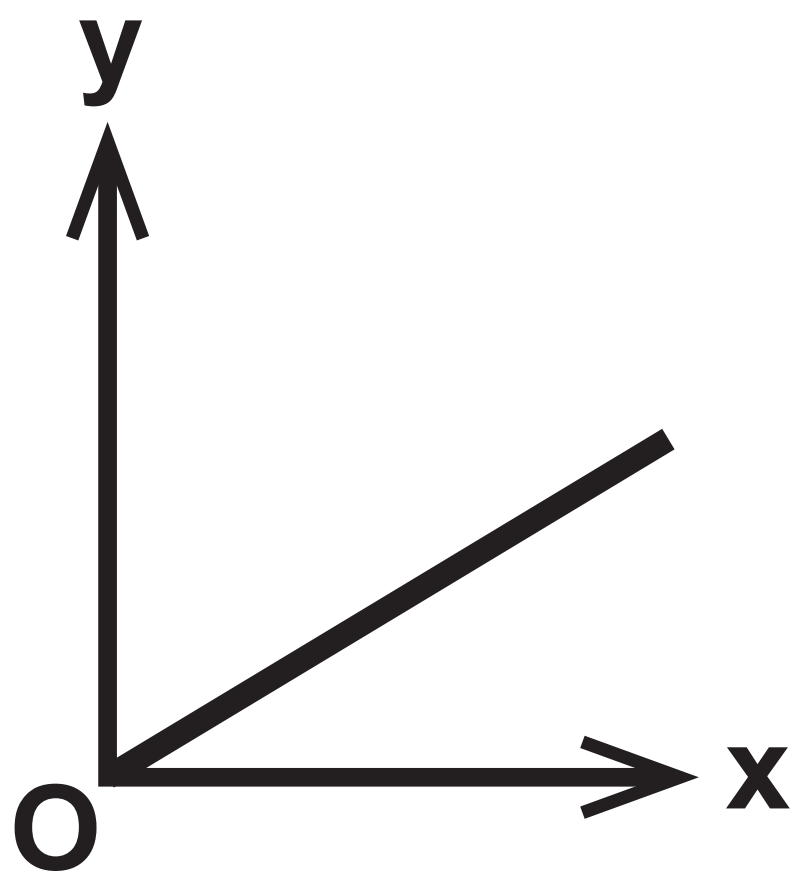


Question 10

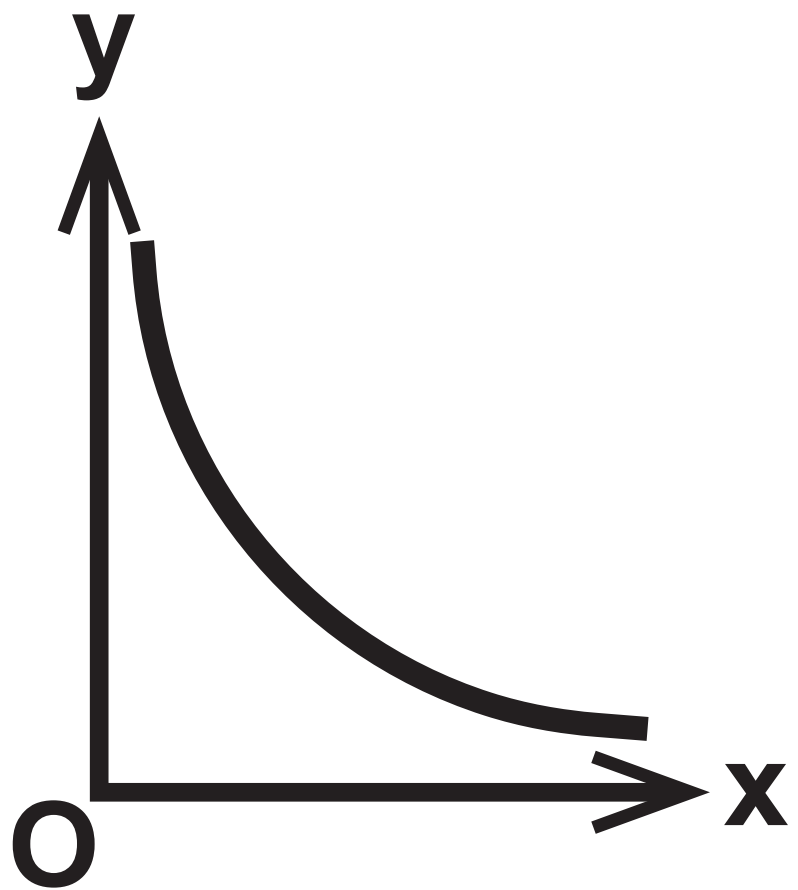


Question 11

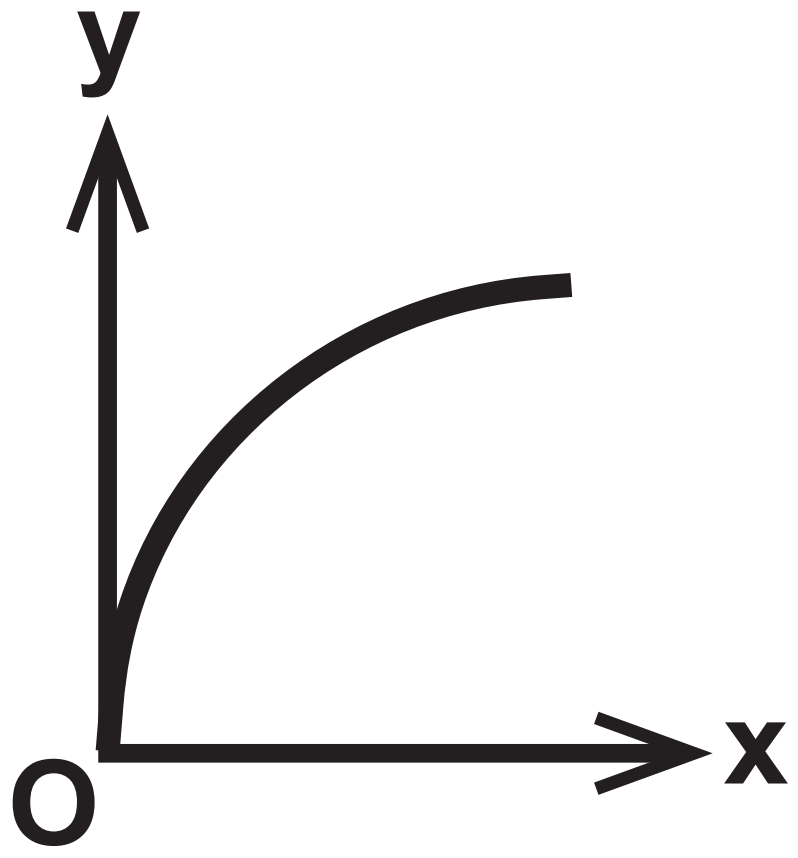
Graph A



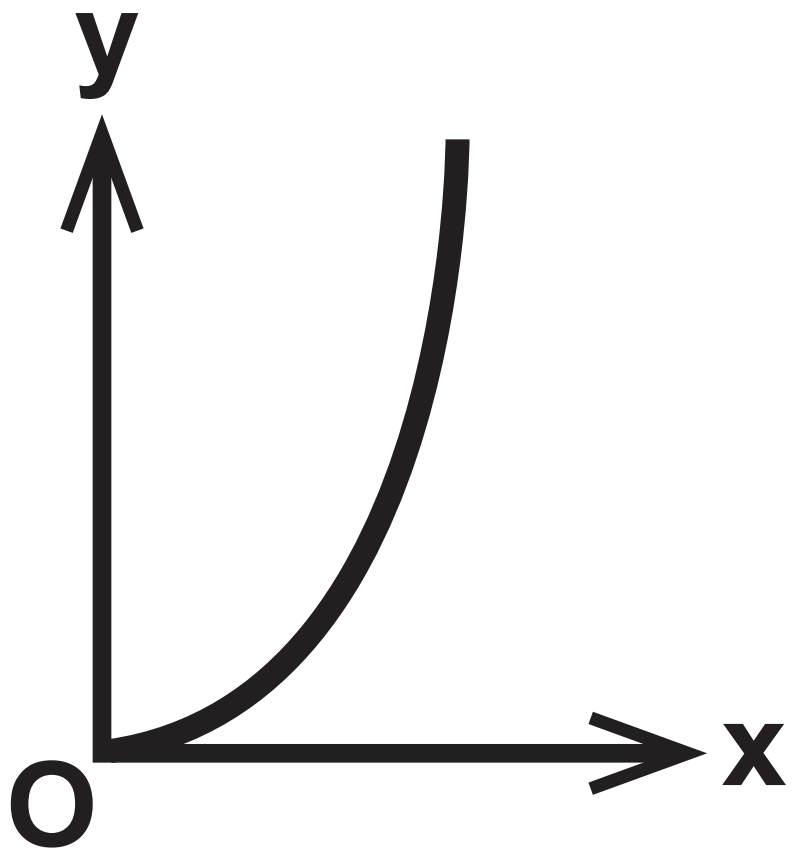
Graph B

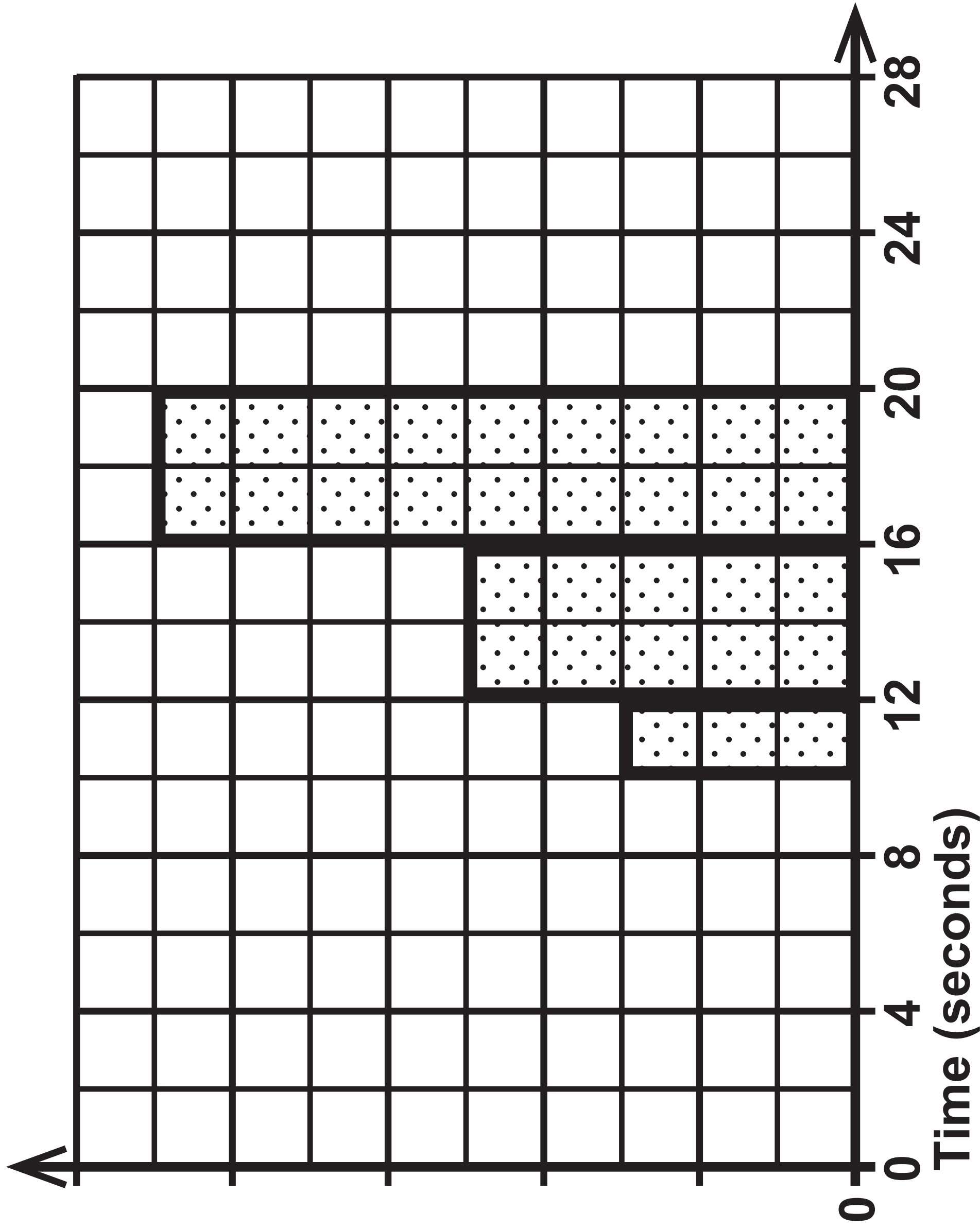


Graph C



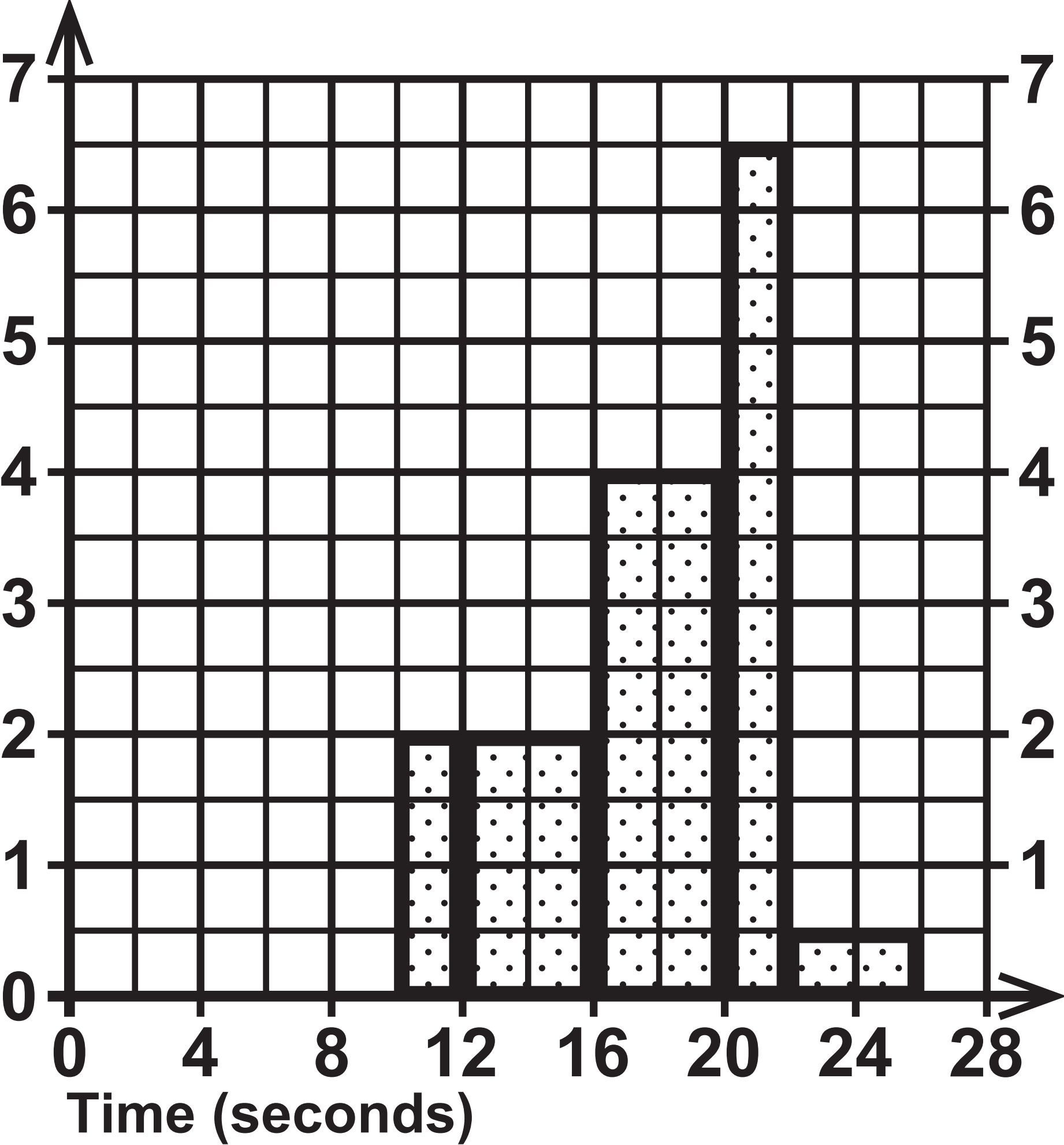
Graph D





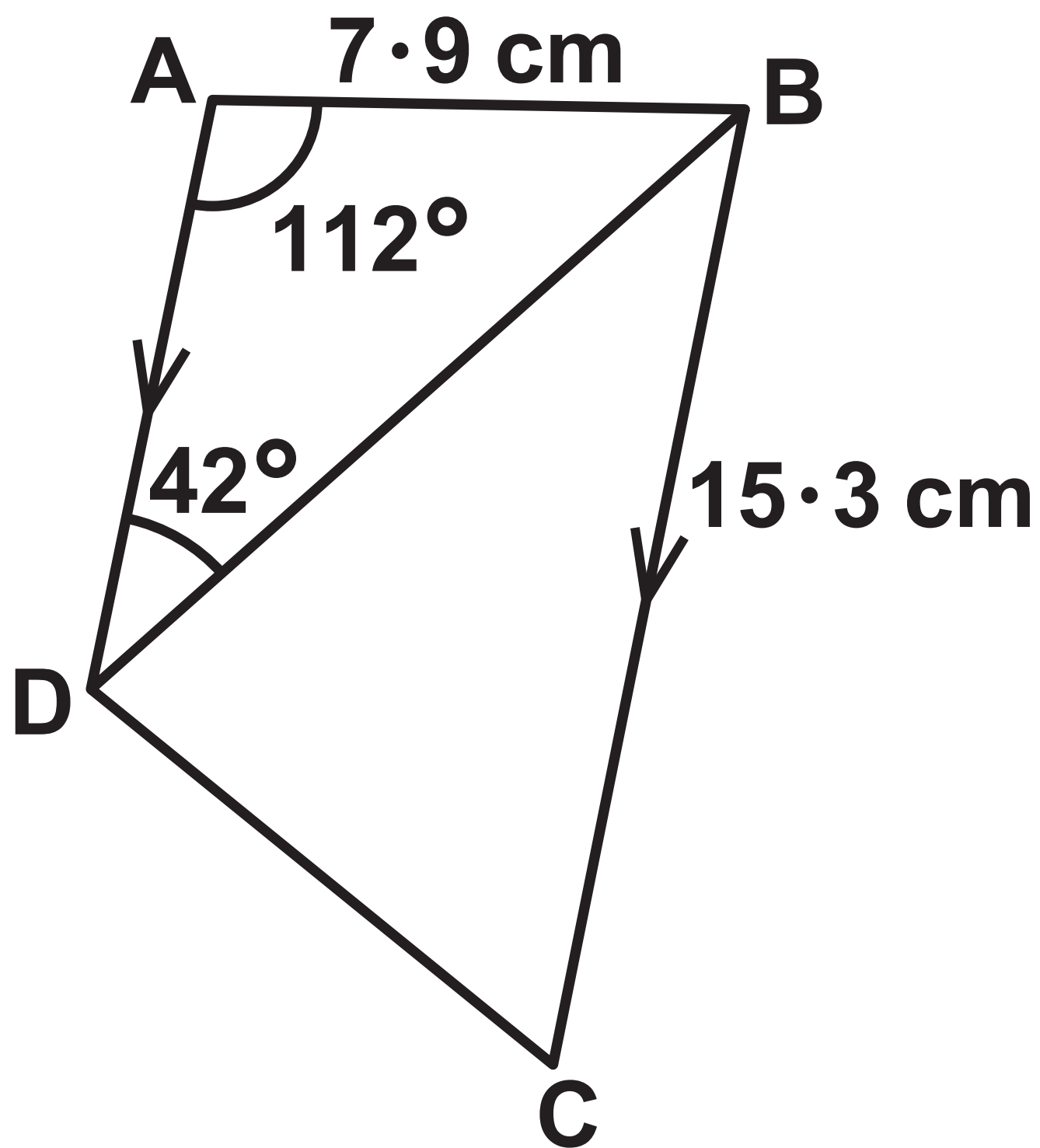
Question 15(c)

Frequency  
density

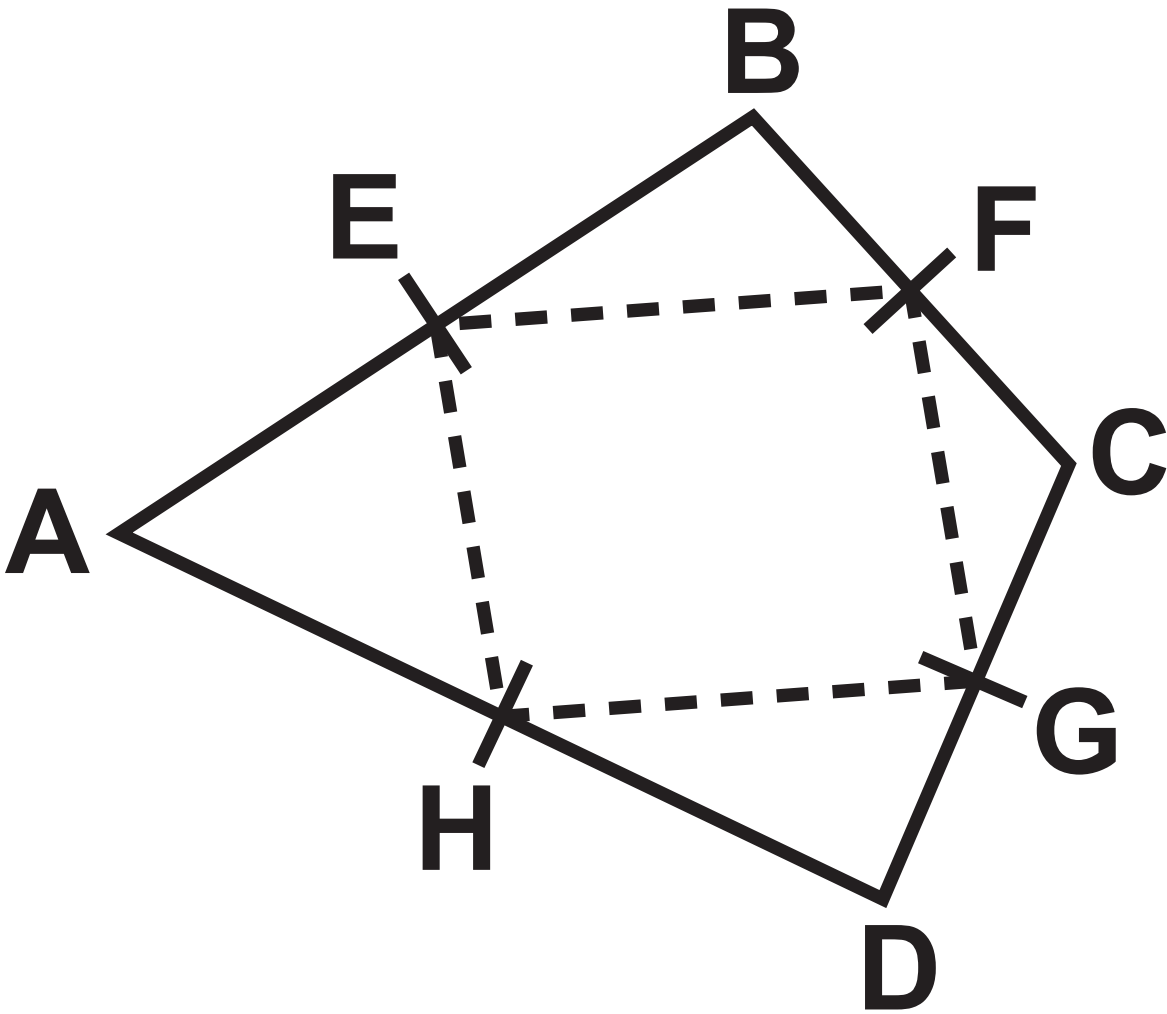




# Question 16



Question 18

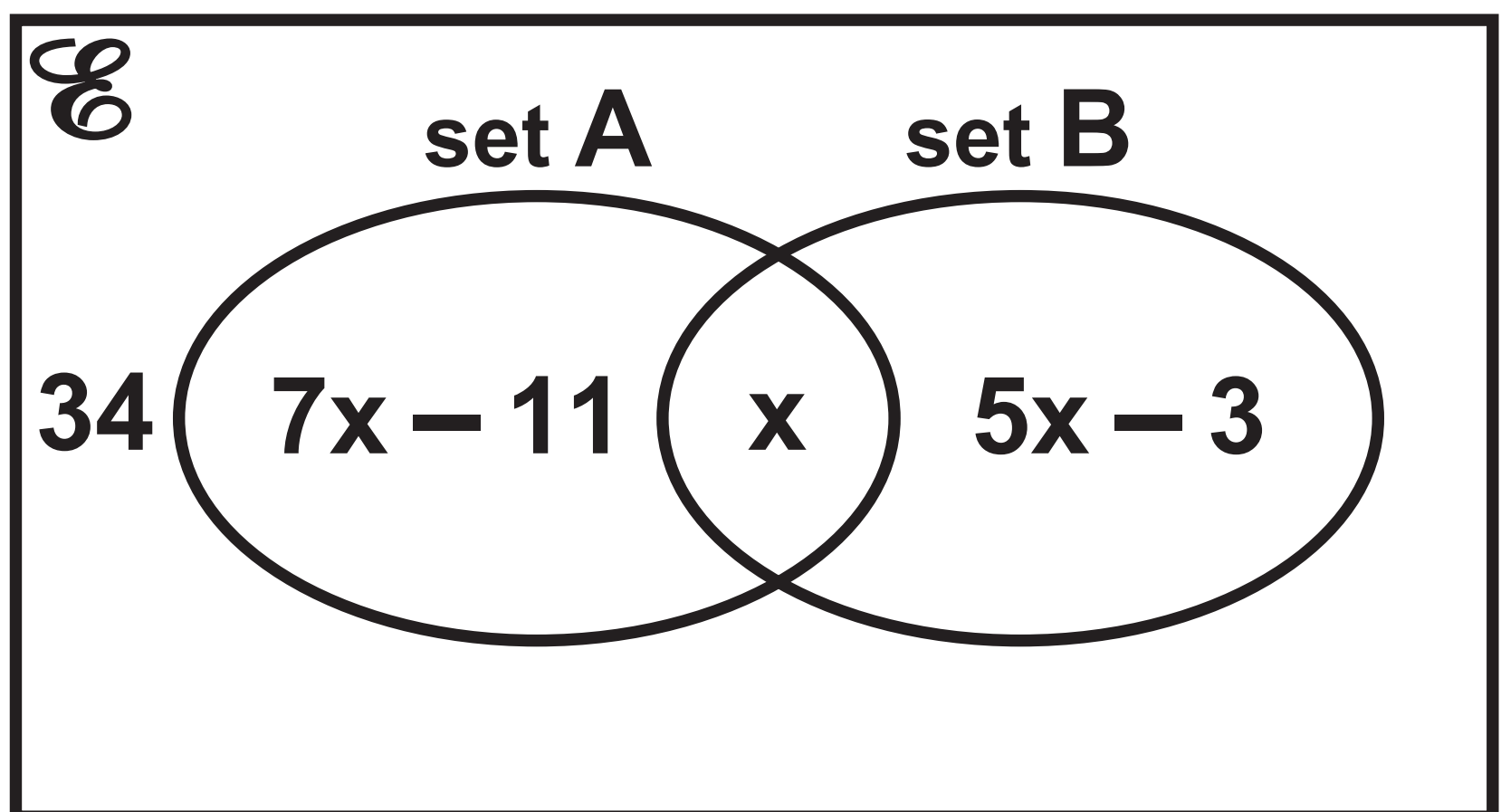


## Question 21

$\mathcal{E} = \{\text{all medals}\}$

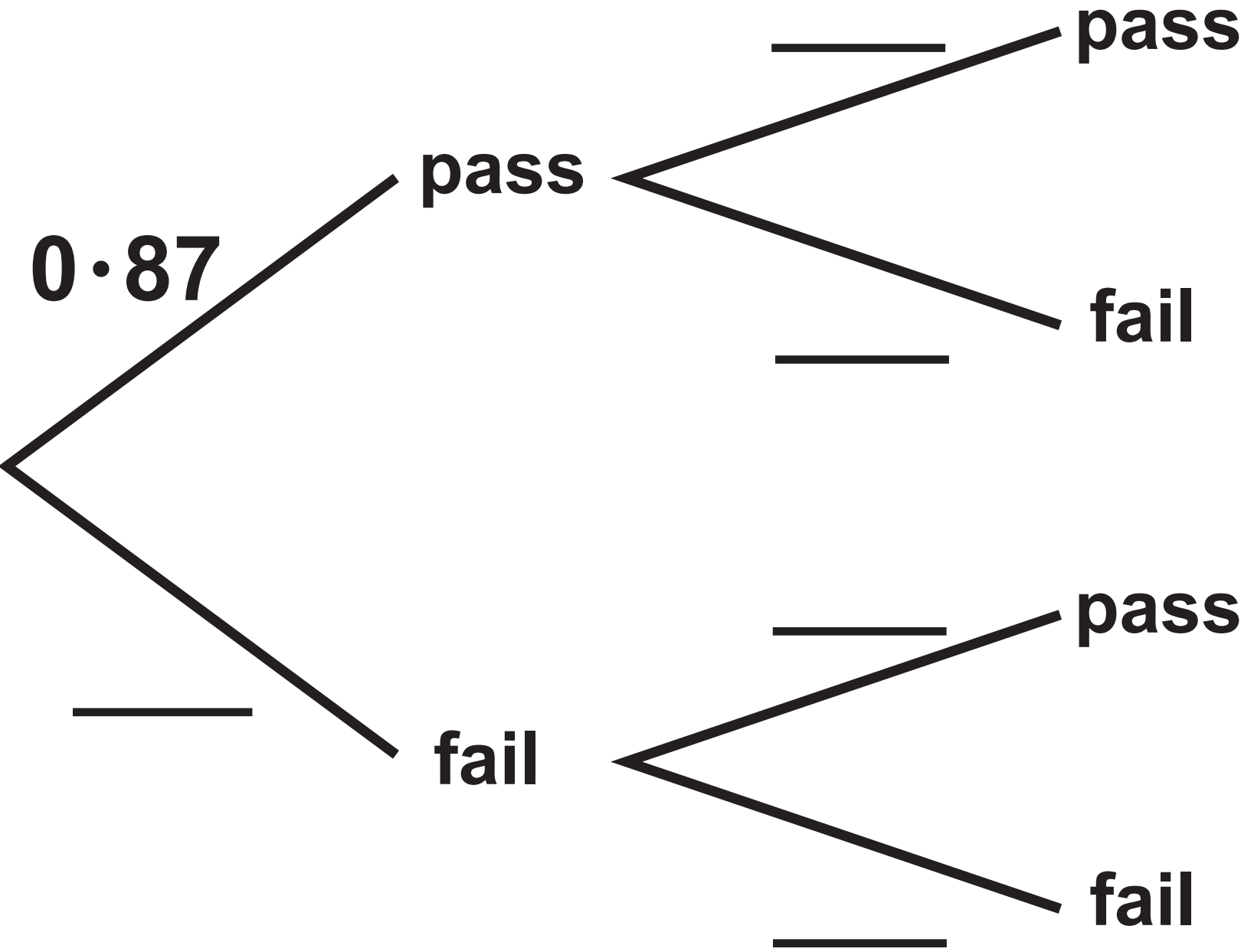
$A = \{\text{English medals}\}$

$B = \{\text{gold medals}\}$



Question 10

First test                      Second test



Frequency density

